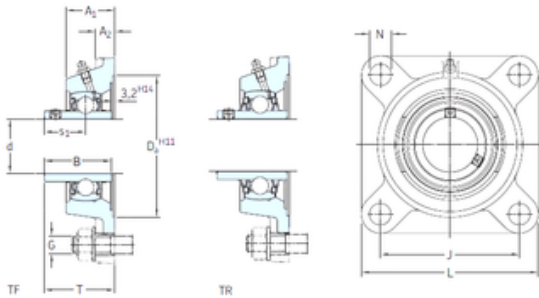




NTNY BEARING LTD

skf fy 40 tf bearing

Bearing No. fy 40 tf



fy 40 tf Bearing 2D drawings and 3D CAD models

Bore Diameter	40 mm
d	40 mm
Da	115,9 mm
s1	30,2 mm
A1	38,5 mm
B	49,2 mm
G	12 mm
J	101,5 mm
L	130 mm
N	14 mm
T	54,2 mm
A2	14 mm
Weight	1,9 Kg
Basic dynamic load rating (C)	30,7 kN
Basic static load rating (C0)	19 kN
Fatigue load limit (Pu)	0,8
Category	Flange Block Bearings
Inventory	0.0
Manufacturer Name	SKF
Minimum Buy Quantity	N/A
Weight / Kilogram	1.902
EAN	7316577035936
Product Group	M06110
Number of Mounting Holes	4
Mounting Method	Set Screw
Housing Style	4 Bolt Square Flange Block



NTNY BEARING LTD

Rolling Element	Ball Bearing
Housing Material	Cast Iron
Expansion / Non-expansion	Non-expansion
Mounting Bolts	12 Millimeter
Relubricatable	Yes
Insert Part Number	YAR 208-2F
Seals	M Seal
Housing Configuration	1 Piece Solid
Pilot Configuration	No Pilot
Inch - Metric	Metric
Long Description	4 Bolt Square Flange Block; 40MM Bore; 144MM Bolt Circle; 101.5MM Bolt Spacing; 1 Piece Solid; Set Screw Mount; Cast Iron; Ball Bearing; 49.2MM Length Thru Bore; Relubricatable; M Seal Seals
Other Features	Single Row Standard Duty Wide Inner Race Open End Has Flinger Y Bearing
Category	Flange Block
UNSPSC	31171501
Harmonized Tariff Code	8483.20.40.40
Noun	Bearing
Keyword String	Flanged
Manufacturer URL	http://www.skf.com
Manufacturer Item Number	FY 40 TF
Weight / LBS	4.19
Nominal Bolt Circle Diameter Round	5.7 Inch 144 Millimeter
Bolt Spacing	3.996 Inch 101.5 Millimeter
Cartridge Pilot Diameter	0 Inch 0 Millimeter
Cartridge Pilot Depth	0 Inch 0 Millimeter



NTNY BEARING LTD

Bore	1.575 Inch 40 Millimeter
Length Thru Bore	1.937 Inch 49.2 Millimeter
bore diameter:	40 mm
radial static load capacity:	19 kN
bolt center-to-center length:	101.5 mm
seal type:	Contact with Flinger
overall length/diameter:	130 mm
length through bore:	54.2 mm
bore type:	Round
operating temperature range:	Maximum of +110 ° F
duty type:	Standard Duty
finish/coating:	Uncoated
mounting type:	Four-Bolt Flange
maximum rpm:	4800 RPM
housing material:	Cast Iron
lubrication type:	Lubrication Fitting
locking device:	Set Screw
series:	FY
expansion type:	Non-Expansion Bearing (Fixed)
replacement bearing:	YAR 208-2F
radial dynamic load capacity:	30.7 kN
manufacturer upc number:	7316577035936
Housing material	Cast iron
D _a	115.9 mm
D _{b1}	98 mm
D _{b2}	106 mm
A	38.5 mm
A ₁	14 mm
A ₃	3.2 mm
A ₅	23.5 mm



NTNY BEARING LTD

s_1	30.2 mm
R_G	1/4-28 UNF
R_1	25.5 mm
D_N	6.5 mm
SW_N	7 mm
G_N	1/4-28 SAE-LT
J_6	118 mm
J_7	34 mm
N_4	4 mm
Basic dynamic load rating C	30.7 kN
Basic static load rating C_0	19 kN
Fatigue load limit P_u	0.8 kN
Limiting speed	4800 r/min
Mass bearing unit	1.75 kg
Thread grub screw G_2	M8x1
Hexagonal key size for grub screw N	4 mm
Recommended tightening torque for grub screw	6.5 N · m
Recommended diameter for attachment bolts, mm G	12 mm
Recommended diameter for attachment bolts, inch G	0.5 in