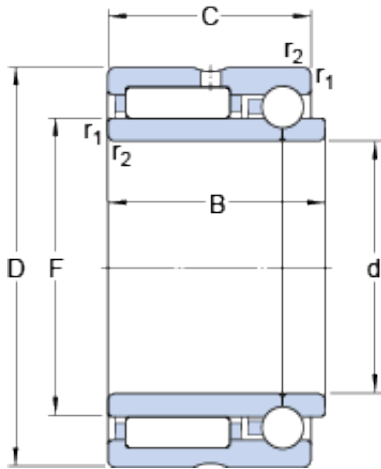




# NTNY BEARING LTD



17 mm x 30 mm x 20 mm skf nkib 5903 bearing

Bearing No. nkib 5903

nkib 5903 Bearing 2D drawings and 3D CAD models

Size	30x17x20 mm
Bore Diameter	30 mm
Outer Diameter	17 mm
Width	20 mm
d	17 mm
D	30 mm
B	20 mm
C	18 mm
F	22 mm
r <sub>1,2</sub> - min.	0.3 mm
d <sub>a</sub> - min.	19 mm
D <sub>a</sub> - max.	28 mm
r <sub>a</sub> - max.	0.3 mm
Basic dynamic load rating, radial direction - C	11.4 kN
Basic static load rating, radial direction - C <sub>0</sub>	16.3 kN
Basic dynamic load rating, axial direction - C	2.2 kN
Basic static load rating, axial direction - C <sub>0</sub>	2.7 kN
Fatigue load limit, radial direction - P <sub>u</sub>	2 kN
Fatigue load limit, axial direction - P <sub>u</sub>	0.116 kN
Reference speed	18000 r/min
Limiting speed	20000 r/min



## NTNY BEARING LTD

Category	Roller Bearings
Inventory	0.0
Manufacturer Name	SKF
Minimum Buy Quantity	N/A
Weight / Kilogram	0.061
EAN	7316570809282
Product Group	B04144
bore diameter:	17 mm
closure type:	Open
outside diameter:	30 mm
fillet radius:	0.3 mm
overall width:	20 mm
lubrication type:	Grease
bearing type:	Needle Roller/Angular Contact Ball
cage material:	Steel
operating temperature range:	Max 250 ° F
series:	NKIB
radial dynamic load capacity:	11.4 kN
manufacturer product page:	<a href="#">Click here</a>
radial static load capacity:	16.3 kN
manufacturer upc number:	7316570809282
bearing material:	Steel
weight:	0.13 lb
maximum rpm:	20000 rpm
r <sub>1,2</sub> min.	0.3 mm
d <sub>a</sub> min.	19 mm
D <sub>a</sub> max.	28 mm
r <sub>a</sub> max.	0.3 mm
Basic dynamic load rating, radial direction C	11.4 kN



## NTNY BEARING LTD

Basic static load rating, radial direction $C_0$	16.3 kN
Basic dynamic load rating, axial direction C	2.24 kN
Basic static load rating, axial direction $C_0$	2.74 kN
Fatigue load limit, radial direction $P_u$	1.96 kN
Fatigue load limit, axial direction $P_u$	0.116 kN
Mass bearing	0.058 kg